

APOLLONIA GARDENS



In Touch With Nature

MOTTO



“Get city breaks and forest scent in Apollonia Gardens!”

It's often said that a man's home is his castle - a refuge of his pleasures, whose only qualities are the impenetrability of its walls and the ambiance within. A hectic day, a congested roadway, the smog filled city, are at the end of the day, just milestones along the road home. Unfortunate consequences, troubles as we call them, that end at the gates of your home. Your castle.



LOCATION



LOCATION

- **Corbeanca** – the most developed residential area North Bucharest
- **Address** – Fermei Street, Postal Code 077065, Corbeanca , Ilfov
- **GPS coordinates** – 44 03 35' / 26 01 1'

ADVANTAGES

- Continuously growing infrastructure area
- Quiet area, away from any source of pollution
- Easy access to city
- Close to the forest
- Proximity to Otopeni Henri Coanda International Airport

CONCEPT



- **APOLLONIA GARDENS** satisfies a wide spectrum of demands and needs, offering comfort, safety and a modern lifestyle
- Different types of units built by SIPs – Structural Insulated Panels System
- Plot area: 30,337 sqm, high quality standards
- **“GREEN”** concept providing a total of 115 units
- **PHASE 1:**
 - Plot size: 1,052 sqm
 - 16 units: Villas and “Town Homes”
 - Built areas: between 80 sqm and 150 sqm
 - Excellent thermal and acoustic insulation, earthquake resistant and harmonious climate
 - Highest quality of finishes

WHY SIPs FOR APOLLONIA GARDENS?

- ✓ **Energy efficiency and acoustic protection**
- ✓ **Environmental Sustainability**
- ✓ **Safety & Durability**
- ✓ **Cost Efficiency / Competitive Prices**
- ✓ **Design Flexibility**
- ✓ **Time Savings**



VILLAS – DETAILS

- **6 IDENTICAL UNITS IN 3 “DUPLEX” BUILDINGS (30-A; 30-B; 31-A; 31-B; 32-A; 32-B) - GF + 1 + A**
 - Ground Floor: living, kitchen, bathroom, hall
 - First Floor: 3 bedrooms, 2 bathrooms, hall
 - Attic: open space

Model	Plot size (sqm)	Built area (sqm)		Yard (sqm)
		P+1	Attic	
30-A; 30-B; 31-A; 31-B	179.00	146.50	51.56	105.75
32-A	175.00	146.50	51.56	101.75
32-B	177.00	146.50	51.56	103.75



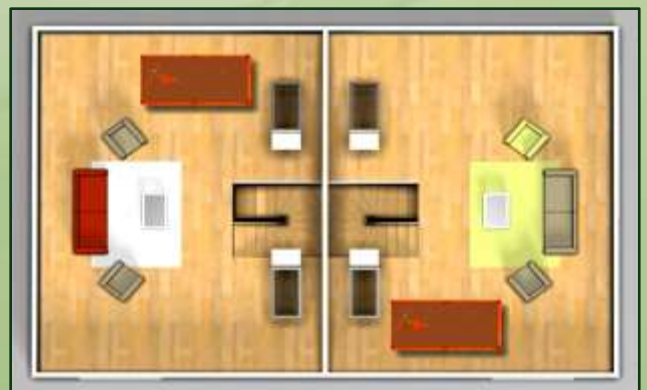
VILLA – FACADE



VILLA – GROUND FLOOR PLAN



VILLA – 1st FLOOR PLAN



VILLA – ATTIC PLAN

LOT A – DETAILS

- **3 UNITS (A1; A2; A3) - GF + 1 + A**
 - Ground Floor: living, kitchen, bathroom, closet, hall
 - First Floor: 3 bedrooms, 2 bathrooms, hall
 - Attic: open space

Model	Plot size (sqm)	Built area (sqm)		Yard (sqm)
		P+1	Attic	
A1	127.00	117.70	33.05	68.15
A2	95.63	96.92	29.59	47.17
A3	174.00	97.62	28.15	125.19



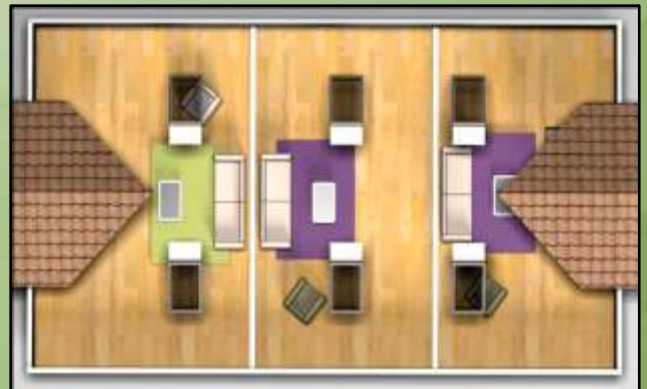
LOT A – FACADE



LOT A – GROUND FLOOR PLAN



LOT A – 1st FLOOR PLAN



LOT A – ATTIC PLAN

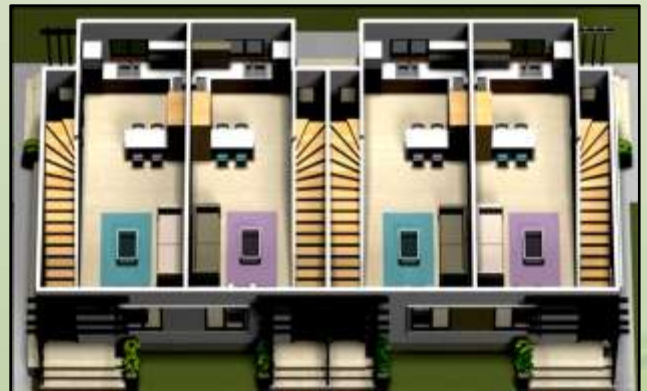
LOT B – DETAILS

- **4 UNITS (B1; B2; B3, B4) - GF + 1 + A**
 - Ground Floor: living, kitchen, bathroom, closet, hall
 - First Floor: 2 bedrooms, 2 bathrooms, hall
 - Attic: open space

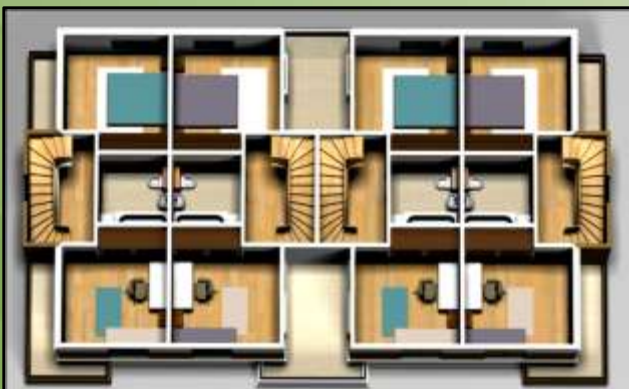
Model	Plot size (sqm)	Built area (sqm)		Yard (sqm)
		P+1	Attic	
B1	129.00	78.60	24.14	89.70
B2	82.00	78.20	25.55	42.90
B3	82.00	78.20	25.55	42.90
B4	129.00	78.60	24.14	89.70



LOT B – FACADE



LOT B – GROUND FLOOR PLAN



LOT B – 1st FLOOR PLAN



LOT B – ATTIC PLAN

LOT C – DETAILS

- **3 UNITS (C1; C2; C3) - GF + 1 + A**
 - Ground Floor: living, kitchen, bathroom, hall
 - First Floor: 3 bedrooms, 2 bathrooms, hall
 - Attic: open space

Model	Plot size (sqm)	Built area (sqm)		Yard (sqm)
		P+1	Attic	
C1	143.00	129.80	38.38	78.10
C2	120.00	129.00	44.97	55.50
C3	159.00	129.80	38.38	94.10



LOT C – FACADE



LOT C – GROUND FLOOR PLAN



LOT C – 1st FLOOR PLAN



LOT C – ATTIC PLAN

FINISHES & UTILITIES



FLOORS:

- ECO bamboo parquet – bedroom, living room, hall and stairs
- Ceramic tiles – bathroom and kitchen (all wet areas)

WALLS:

- **Exterior** - Washable paint
- **Interior**
 - Washable paint
 - Ceramic tiles – bathroom and kitchen (all wet areas)

WINDOWS:

- Thermal insulated PVC and Aluminum windows (5 rooms)

DOORS:

- Main entrance – PVC / “safety lock”
- Interior doors – veneered wood 4.2 cm with rubber gaskets

OTHERS:

- Laminated kitchen furniture (high density)
 - All furniture items - VAKELITE (slide opening system, top of cabinets)
 - Double sink
- Radiators – 3 rooms
- Bathroom – sink, tub, shower, toilet high quality
- Bedrooms – including dressing

UTILITIES:

- Water well
- Water purification station / sewage
- Central heating systems for each unit / apartment – FEROLLI
- Central system for rainwater
- Electricity
- Air conditioning connections

CONTACT INFO

The Grand Offices

7th floor, Comp. 7.14, Calea 13 Septembrie 90

Bucharest, 050726

Romania

Phone: +40 21 311 2478

Fax: +40 21 311 2482

Innovations Business Park

Clinceni village, Gladiolelor F.N. Street, Comp. B12

Ilfov, 077090

Romania

Phone: +40 21 369 3315

Fax: +40 21 369 3318



E-mail: info@apolloniagardens.ro

Web: www.apolloniagardens.ro

